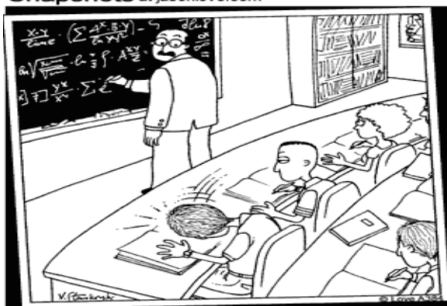


A Library of Parent Functions

Feb 12-08:11

Snapshots at jasonlove.com



Professor Herman stopped when he heard that unmistakable thud – another brain had imploded.

Aug 25-8:25 AM



Aug 25-8:38 AM

Square Root function:

$$f(x) = \sqrt{x}$$

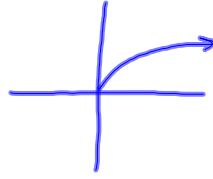
domain: $x \geq 0$

range: $f(x) \geq 0$

even/odd: *neither*

intercepts: $(0,0)$

increasing/decreasing:



Oct 26-7:27 AM

Reciprocal function:

$$f(x) = \frac{1}{x}$$

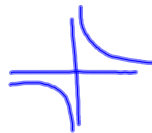
domain: all \mathbb{R} 's, $x \neq 0$

range: all \mathbb{R} 's, $f(x) \neq 0$

even/odd:

intercepts: *none*

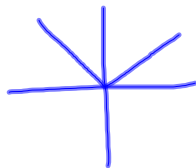
increasing/decreasing:



Oct 26-7:27 AM

absolute value

$$f(x) = |x|$$



Aug 26-2:41 PM

Greatest Integer Function:

$$f(x) = \lfloor x \rfloor$$

this means the greatest integer less than or equal to x

"round down"

Oct 22-7:21 AM

$$f(x) = \lfloor x \rfloor$$

$$f(3) = 3$$

$$f(.5) = 0$$

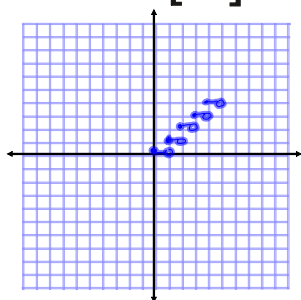
$$f(67.445) = 67$$

$$f(5/8) = 0$$

$$f(-5.4) = -6$$

Oct 22-7:32 AM

Graph: $f(x) = \lfloor x \rfloor$



Step

0	0
.5	0
.9	0
.99999	0
1	1
1.9	1
1.99999	1

Oct 22-7:33 AM

